

Introduction

Covid-19 cases have significantly decreased in the state of Indiana and nationally, and Covid-19 vaccines are widely available. To reduce the reporting burden for Long-term Care (LTC) facilities, the Indiana Department of Health (IDOH) is implementing changes to the mode and frequency of COVID-19 cases that were previously reported through the Long-term Care Covid-19 Reporting form. Effective March 14, these cases will be reported only when there is an outbreak case alert through the LTC Incident Reporting Gateway application. This change does not affect other reporting pathways. IDOH wants to offer clear guidelines for facilities so they can correctly and accurately submit data regarding their residents and staff.

Data Sources for COVID-19 Related Data Submission

The table and chart below outline the various pathways LTC facilities submit COVID-19 related data to the state and federal governments.

Importantly, the state requires that facilities report to the following systems, which are focused on patient-level testing information:

- Long-term Care Gateway Application (row 1 below)
 - Outbreak Case Alert: 1 or more confirmed resident and/or staff cases in a facility where no confirmed cases were identified during 4-week period prior to the most recent week
 - The purpose of this reporting is to identify facility associated infections. Facilities do not count resident cases that were positive upon admission OR new admission that turns positive while in transmission-based precautions (TBP) or staff cases that did not enter the building during the infectious period (48 hours) before their positive test or symptoms and after the onset of symptoms or positive test).
- COVID-19 Point of Care (POC) Test Reporting [form](#) (row 2 below) or NHSN Point of Care Laboratory Reporting Tool (row 4 below)
- Death Reporting: complete a Confidential Report of Communicable Disease [Form](#) for COVID-related deaths (row 5 below)

In addition, the federal government (the Centers for Medicare & Medicaid Services) requires all certified nursing homes (SNF/NFs) to submit facility-specific data to the National Healthcare Safety Network (NHSN) (rows 3 below).

Reporting Systems for COVID-19

	Reporting System/Form	System	Purpose/Description	Required? For Whom?	Time Frame
1	Long-term Care Gateway Application	IDOH: Survey Report System	For outbreak case alert reporting including both staff and residents. Only required if case meets criteria for outbreak case alert.	Yes, for all SNF/NF and RCF/AL	Within 24 hours of outbreak case alert
2	COVID-19 Point of Care (POC) Test Reporting form	REDCap: Managed by IDOH	POC test reporting form that should include positive POC test results (even if potentially a false positive). Negative results may still be reported, but reporting negative POC test results is optional. ¹ Required for facilities unless point-of-care data is being submitted to NHSN directly (row 4) ²	Yes, for RCF/AL and any SNF/NF not yet reporting in row 4	Within 24 hours of result of POC test
3	NHSN LTCF COVID-19 Module	Web Portal: Managed by NHSN	NHSN-required fields solely for certified nursing homes (SNF/NFs). ³	Yes, for all SNF/NF and any voluntary AL	Weekly, with a preference for submission on the same day each week
4	NHSN Point of Care Laboratory Reporting Tool	Web Portal: Managed by NHSN	POC test reporting that should include positive test results (even if potentially a false positive). Negative results may still be reported, but reporting negative POC test results is optional. ¹	No, for SNF/NF only, if not reporting via another pathway	Within 24 hours of result of POC test
5	Death Reporting⁴	Confidential Report of Communicable Disease Form	For reporting any death identified as related to "COVID-19" Complete form and fax to 317-234-2812.	Yes	Within 24 hours of the death

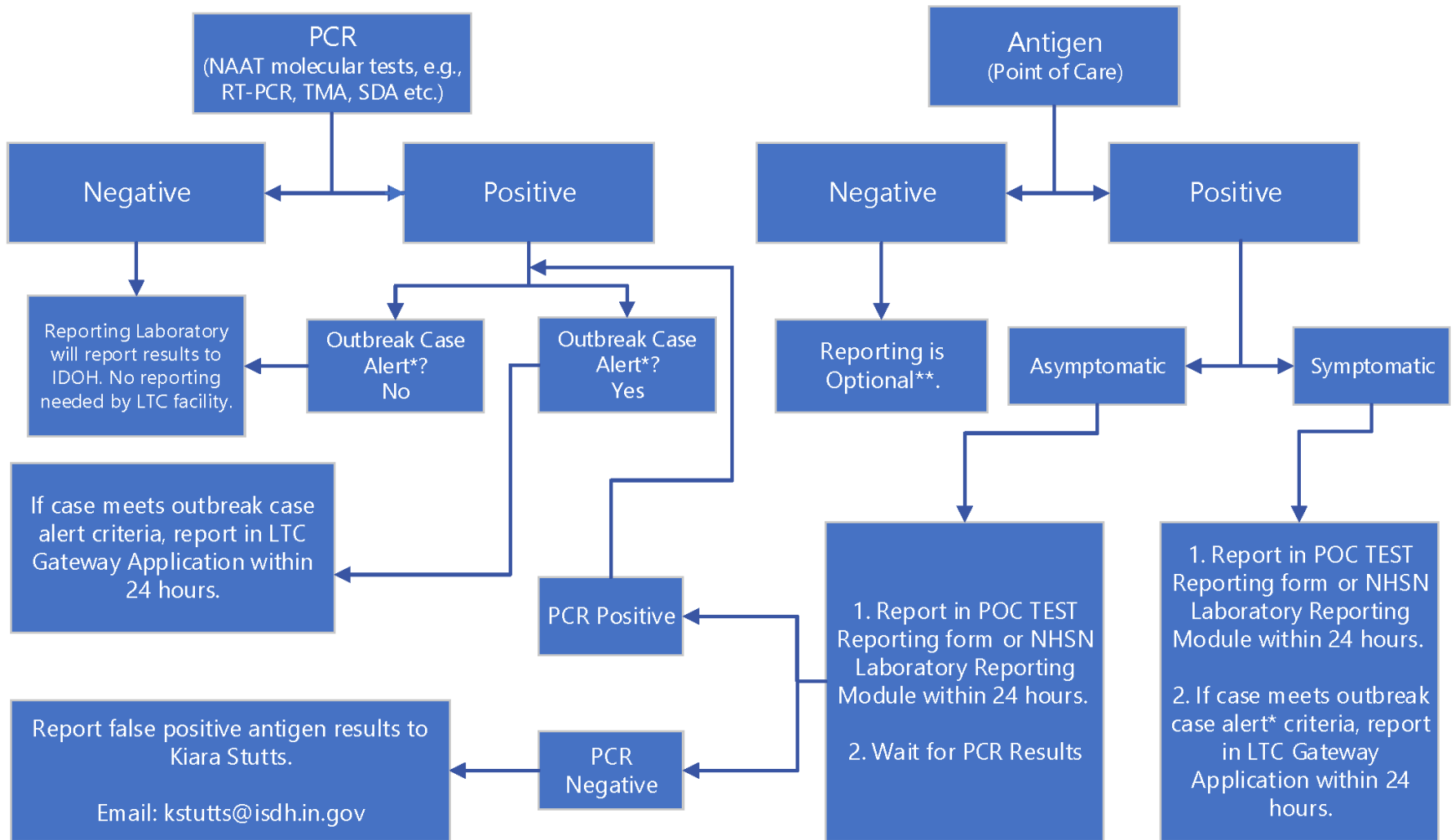
¹ Beginning April 4, 2022, facilities are not required to report negative POC test results (non-NAAT tests e.g., rapid or antigen test results).

² If a previously submitted positive result comes back as a false positive (or vice versa), please email James Sainsbury (JSainsbury@isdh.in.gov) or Lunden Espinosa (LEspinoso@isdh.in.gov) for further assistance.

³ This data is gathered by IDOH weekly.

⁴ Beginning Sept. 9, 2022, the death reporting hotline will be discontinued. Complete the "[Confidential Report of Communicable Disease Form](#)" and fax to 317-234-2812.

Long-Term Care Data Submission Process Flow



*Outbreak Case Alert: One or more confirmed Resident and/or Staff cases in a facility where no confirmed cases were identified during 4-week period prior to the most recent week. Reporting in LTC Gateway Application is only required if case meets criteria for Outbreak Case Alert.

**Beginning April 4th, 2022 new guidance will no longer require reporting of negative results for non-NAAT tests (e.g., rapid, or antigen test results). If you are reporting negative results please follow previous reporting guidelines and report in POC TEST Reporting form or NHSN Laboratory Reporting Module.